

Handwheels and spindle extension for handwheels

For gate valves and house connection valves

06-07/103900058/01.2007

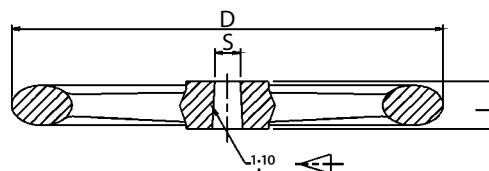
6

Page 1 of 1

S-1110 Handwheel for ESCO gate valves S-1140, S-1240, S-2840, S-2960/65



Material: Ductile iron EN-GJL-250
Coating: Epoxy minimum 250 µm
Colour: Blue RAL 5017



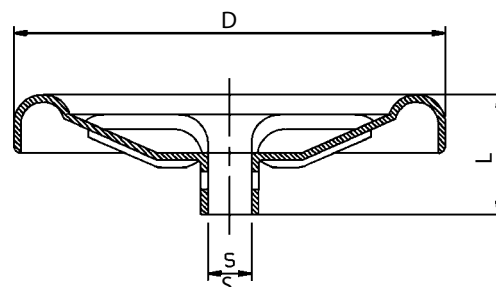
For valve DN	D mm	S mm	L mm	Weight kg	Esco no.	NRF no.
40-50	160	□ 12	20	1,0	11005027	550 2003
40-50*	200	□ 12	30	2,0	11004027	
60-65	200	□ 17	26	1,6	11020097	
60-65*	200	□ 17	26	1,6		
80	200	□ 19	30	2,0	11008027	550 2006
100-150	250	□ 19	30	3,5	11010027	550 2009
200-250	400	□ 27	38	8,0	11020027	550 2013
200-250*	400	□ 24	38	8,0	11020037	
300	500	□ 27	41	11,0	11025027	550 2016
300*	500	□ 24	41	11,0	11030027	
400	630	□ 32	37	16,0	11040037	

* For S-1155 - gate valves for Sprinkler

S-2110 Handwheel for house connection valves



Material: Steel
Coating: Hot painted
Colour: Red



For valve DN	D mm	S mm	L mm	Weight kg	Esco no.	NRF no.
20-50	120	□ 12	33	0,2	21512120	

S-1112 Spindle extension for handwheels



For resilient seat gate valves

For valve DN	S mm	L mm	Weight kg	Esco no.	NRF no.
100	□ 19	250	1,65	11120100	
150	□ 19	265	1,7	11120150	
200	□ 27	355	2,0	11120200	
250-300	□ 27	195	1,7	11120250	

Kongsberg Esco AS can accept no responsibility for possible errors in catalogues, brochures and other printed material. Kongsberg Esco AS reserves the right to alter its products without notice. This also applies to products already on order provided that such alterations can be made without subsequent changes being necessary in specifications already agreed. All trademarks in this material are property of the respective companies. Kongsberg Esco and the Kongsberg Esco logotype are trademarks of Kongsberg Esco AS. All rights reserved.